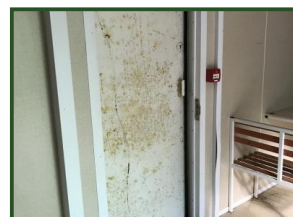


Alsim 32 x 9'6 Foot Canteen



£POA

Anti Vandal Windows, Lockable Steel Doors, Complete With Sink & Hot Water Unit, 12 Benches With 6 Tables, One Owner From New

| Product Details | |
|----------------------|------------------------------|
| Category/Type | Site Accommodation |
| Make | Alsim |
| Model | 32 x 9'6 Foot Canteen |
| Year | - |
| Hours | - |